

Vandal Resistant CP-BS Lead Safe™ J/V Wall Sink Set (NSW) w/150H Swivel G/Neck & V/R Aerator

PRODUCT CODE

- 174.51.22.03



SPECIFICATIONS

- Vandal resistant handle featuring a locking ring to secure the handle to the spindle which may only be removed using the key provided
- Chrome plate finish for easy cleaning and added durability.
- Complies with NSW Education EFSG Guidelines.
- Lead Safe™ brass construction*

IMPORTANT: All Vandal resistant taps are tested in accordance with AS/NZS 3718 and leave our premises in good working order.

*Our Lead Safe™ product range is compliant with the Lead-Free Requirements of the NCC 2022 Vol. Three, Clause A5G4(2) and NSF/ANSI 372.

** Any flow controller incorporated in the outlet to be tightened to prevent removal by hand. As Per AS3718.

WARNINGS: Special attention to be paid on notes, photos, images, or drawings of assembly steps marked with the warning symbol.



TECHNICAL DATA

Inlet		G ½" - Female
Outlet		N/A
Headwork		Jumper Valve
Working Pressure Range (kPa)	Min	50
	Max	500
Working Temperature Range (°C)	Min	5
	Max	65
Nominal Flow Rate (LPM)		5.8
Construction		Brass
Finish		Chrome
NOTE: Galvin Engineering continually strive to improve their products. Specifications may change without notice.		

TOOLS REQUIRED

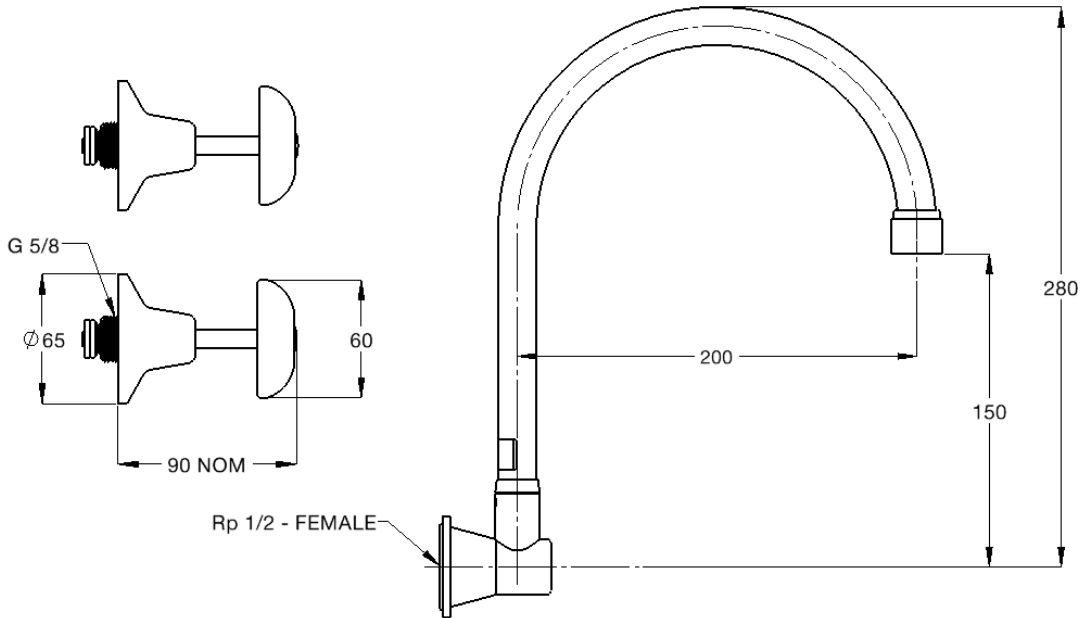
- Spanner or adjustable crescent
- Hex key
- Thread tape

PRE-INSTALLATION

DIMENSIONS

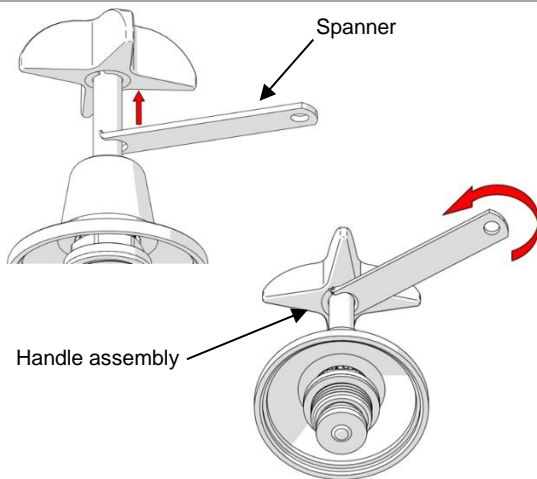


Note: Before installation, all lines must be flushed. We recommend that a line strainer be installed prior to drinking taps to eliminate any foreign material.



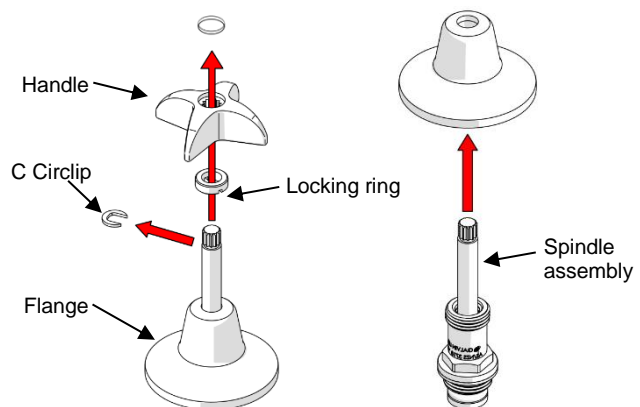
INSTALLATION

INSTALLATION COMPLIANCE: Galvin Engineering products must be installed in accordance with these installation instructions and in accordance with AS/NZS 3500, the PCA and your local regulatory requirements. Water and/or electrical supply conditions must also comply to the applicable national and/or state standards. Failing to comply with these provisions shall void the product warranty and may affect the performance of the product.



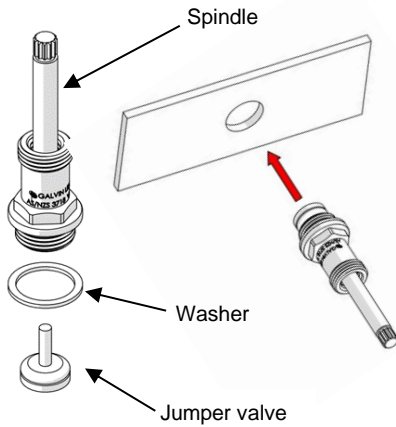
1. Remove locking ring

- Using the supplied spanner, remove the handle assembly locking ring as shown.



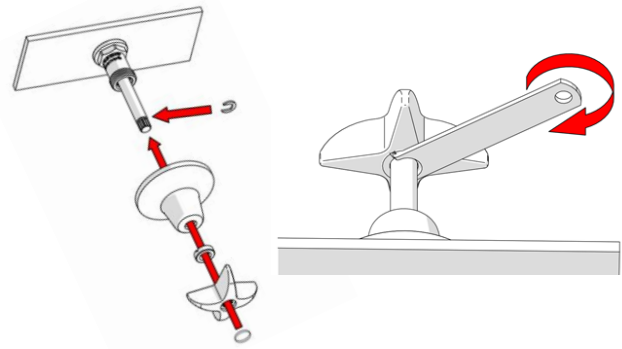
2. Disassemble

- Remove the balance of components as shown.



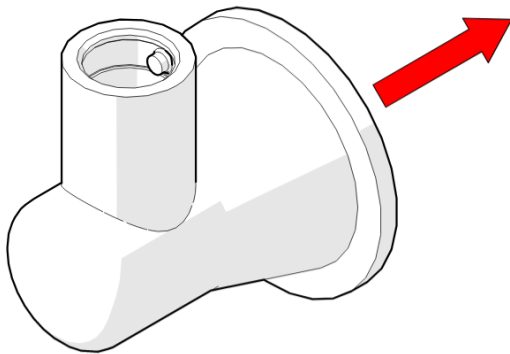
3. Fit spindle

- Fit spindle assembly ensuring the washer and jumper valve is in place.
- Thread tape should be used before fitting the assembly.



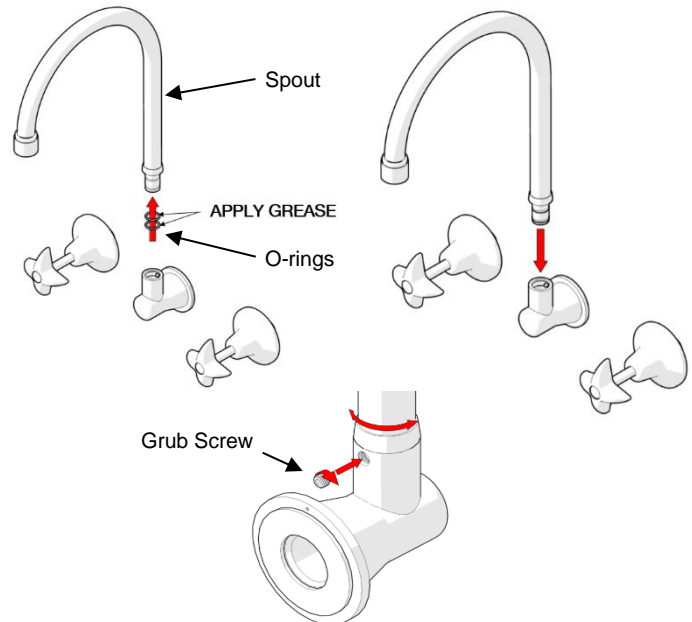
4. Re-assemble

- Fit the assembly components by reversing steps 2 & 1 as shown.



5. Fit outlet base

- Fit outlet base to the wall
- Thread tape should be used before fitting the assembly



6. Fit spout

- Grease spout O-rings and fit the spout.
- Tighten grub screw using a hex key



7. Testing

- Turn on water supply and test for leaks and correct operation

TROUBLESHOOTING

PROBLEM	CAUSE	RECTIFICATION
Water is not flowing from tap	Water supply is turned off	Turn on water supply
	Obstruction on spout	Check if there are obstructions hindering the water flow in the spout and take it out.
Assembly is leaking	Ensure thread tape was used when the assembly was installed	Repeat installation steps ensuring thread tape is used to seal the assembly
	The supplied washer wasn't installed.	Repeat installation steps ensuring the tap washer is correctly in place
Tap is leaking	Worn jumper valve.	Remove the top assembly and replace the jumper valve

WARRANTY

Galvin Engineering products are covered under our Manufacturer's Warranty. Galvin Engineering products must be installed in accordance with the installation instructions and in accordance with AS 3500 and NCC Volume Three, relevant Australian Standards and local authorities applicable to product being installed. Water and electrical supply conditions must also comply to the applicable national and/or state standards, failing to comply with these provisions may void the product warranty and affect performance of the product.

Please visit www.galvinengineering.com.au to view the full warranty, our Installation Compliance and Maintenance & Cleaning information as well as any other additional information.